

SOLD

306 Unfinished Lots

Offered At: \$TBD

**Sold To
Private
Investor**

Alpine Ridge P1, Mason County, Shelton, WA

Property Details:

Location: Mason County, Shelton, WA

Parcel #: 320181000000

Email transaction team for access to Dropbox

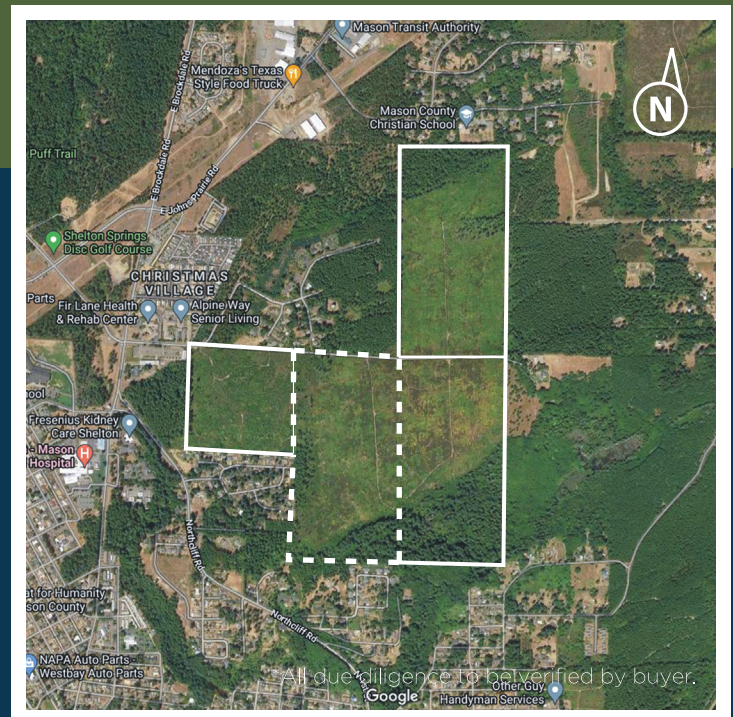
Transaction Process:

Due Diligence Materials:

1. Consultant's List
2. Title Escrow
3. Plans, Site Maps, Flyers
4. Reports, Entitlements
5. Miscellaneous

Offers: Will be reviewed upon request

REV12.19.24



Skeets Fletcher

425.922.2679

skeets@windermere.com

www.skeetsfletcher.com

Windermere
REAL ESTATE

WINDERMERE / YARROW BAY